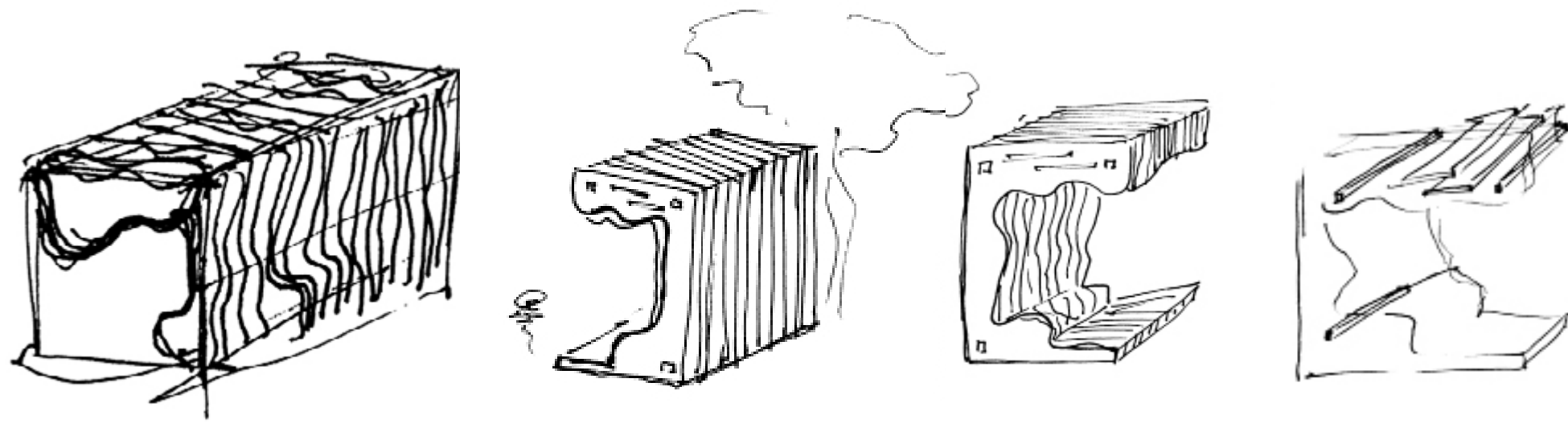


Wavescape

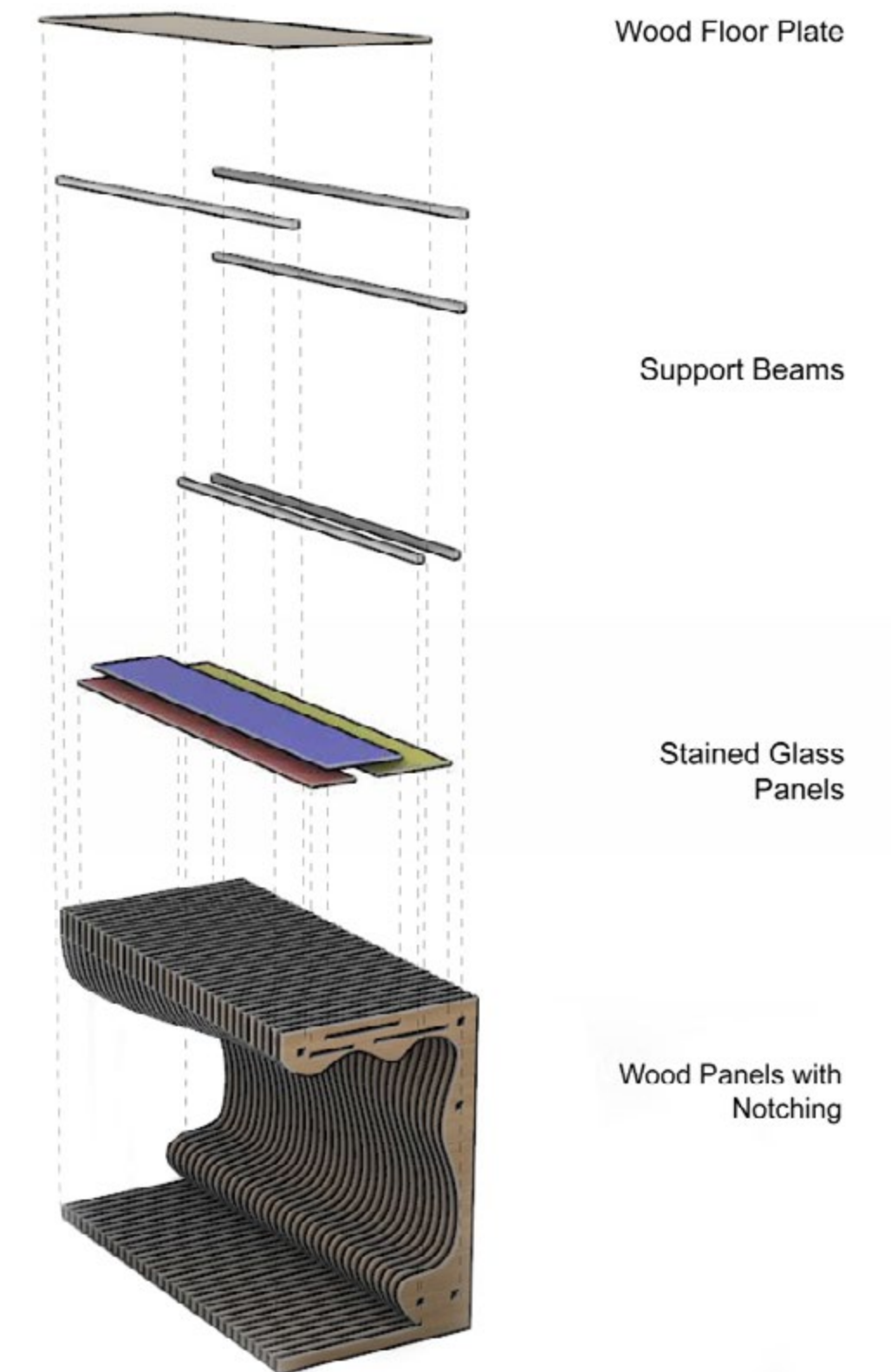
Megan Casal & Nicole Meade



Located along 13th Street in front of the university's College of Education, this bus stop intends to replicate the organic wave-like quality of the sprawling oak trees that occupy the site while also providing shelter to students as they wait for the bus.

Inspired by the undulating branches and textures of the oak trees, this bus stop is comprised of multiple wood panels that are connected by multiple beams that run from one end to another. Each wood panel comes together to create a wavy interior that accomates for seating and shading.

Additionally, notched into each wood panels, 3 overlapping stained glass panels span the project. The primary colors are reflected in the glass panels, casting differing shades of colors beneath where the panels overlap as the sun hits them. This creates an interesting, diffued lighting condition within the shelter while also protecting occupants from harsh sunlight and rain. The color choice is a subtle nod to the College of Education and its roots in primary learning.



Section View of Panels

